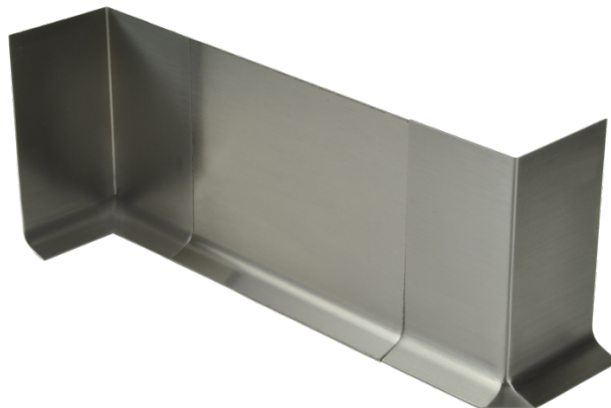
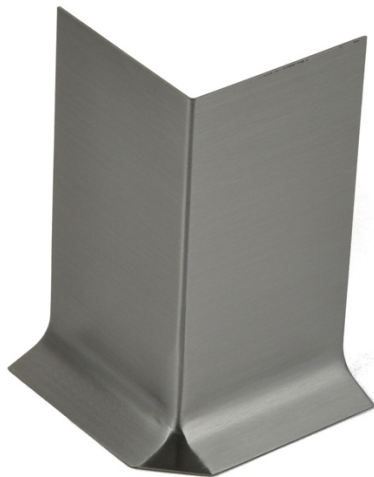


STAINLESS STEEL COVE BASE

SUGGESTED SPECIFICATIONS



- Coved or toeless
- 20 Gauge Stainless Steel
- Type 304 Stainless Steel
- Pre-formed Inside or Outside Corners Available
- Available in 4" (102 mm) and 6" (152mm) height
- Available in 48" (1219.20 mm), 94" (2387.60 mm), 96" (2438.40 mm) and 120" (3048 mm) lengths

STAINLESS STEEL COVE BASE

SUGGESTED SPECIFICATIONS

- Part 1 - GENERAL**
- 1.01 SUMMARY**
- A. This section includes the following types of wall protection systems:
1. Stainless Steel Cove Base
- 1.02 RELATED DOCUMENTS**
- A. Drawings and general provisions of the Contract, including General Conditions and Division 1 Specification Sections apply to this Section.
- 1.03 SUBMITTALS**
- A. General: Submit the following in accordance with conditions of contract and Division 1 specification section 01 33 00 "Submittal Procedures".
- B. Product data and detailed specifications for each system component and installation accessory required, including installation methods for each type of substrate.
- C. Shop drawings showing locations, extent and installation details of corner guards. Show methods of attachment to adjoining construction.
- D. Samples for verification purposes: Submit the following samples, as proposed for this work, for verification of guard.
- E. Product test reports from a qualified independent testing laboratory showing compliance of each component with requirements indicated.
- F. Maintenance data for wall protection system components for inclusion in the operating and maintenance manuals specified in Division 1.
- 1.04 LEED SUBMITTALS**
- A. Credit MR 4.1 and Credit MR 4.2 – Recycled Content: Product data and certification letter indicating percentages by weight of post-consumer and pre-consumer recycled content for products having recycled content. Include statement indicating costs for each product having recycled content.
- B. Credit EQ 4.1 – Adhesive and Sealants: Submit documentation including statement of VOC content.
- 1.05 QUALITY ASSURANCE**
- A. Installer qualifications: Engage an installer who has no less than 3 year's experience in installation of systems similar in complexity to those required for this project.
- B. Manufacturer's qualifications: Not less than 5 year's experience in the production of specified products and a record of successful in-service performance.
- C. Single source responsibility: Provide all components of the wall protection system manufactured by the same company to ensure compatibility of color, texture and physical properties.
- 1.06 DELIVERY, STORAGE AND HANDLING**
- A. Deliver materials to the project site in unopened original factory packaging clearly labeled to show manufacturer.
- B. Material must be stored flat.
- C. Handling: Take adequate measure to prevent damage to materials.
- 1.07 PROJECT CONDITIONS**
- A. Ambient Conditions: Do not install wall protection products until installation areas are enclosed and weatherproof. HVAC system must be operational and maintaining temperature at 65°-75°F (18°-24°C) for at least 72 hours prior to installation.
- Part 2 - PRODUCTS**
- 2.01 MANUFACTURERS**
- A. TheCornerGuardStore.com
11445 E Via Linda, Suite 2 #323, Scottsdale, AZ 85259
Tel: 800-516-0436 www.TheCornerGuardStore.com
- 2.02 MATERIALS**
- A. Stainless Steel: ASTM A240 Type 304, 20 gauge,
- B. Finish: No. 4 Brushed in accordance with ASTM A480.
- C. Adhesive: Polyurethane based construction adhesive.
- 2.03 INSTALLATION ACCESSORIES**
- A. LEED Requirements: Adhesive shall have a VOC content of 50g/L or less when calculated according to 40CFR 59, Subpart D (EPA Method 24).
1. Adhesive: Bostik BOSPRO MS Series A78000 white sealant provided in 10.1oz cartridges.
 2. Microsealant: EternaBond DoubleStick CR-DS Microsealant, provided in 1"x50' rolls, 60mils thick
- 2.04 MANUFACTURED WALL BASE**
- A. Type 304 Stainless Steel Sani-Base:
1. 4.75 inch Stainless Steel Cove Base Straight 48 inch: [CBM-B-SS4-204.75-48](#)
 2. 4.75 inch Stainless Steel Cove Base Straight 94 inch: [CBM-B-SS4-204.75-94](#)
 3. 4.75 inch Stainless Steel Cove Base Straight 96 inch: [CBM-B-SS4-204.75-96](#)
 4. 4.75 inch Stainless Steel Cove Base Straight 120 inch: [CBM-B-SS4-204.75-120](#)
 5. 4.75 inch Stainless Steel Cove Base Inside Corner: [CBM-IC-SS4-204.75](#)
 6. 4.75 inch Stainless Steel Cove Base Outside Corner: [CBM-OC-SS4-204.75](#)
 7. 6 inch Stainless Steel Cove Base Straight 48 inch: [CBM-B-SS4-206-48](#)
 8. 6 inch Stainless Steel Cove Base Straight 94 inch: [CBM-B-SS4-206-94](#)
 9. 6 inch Stainless Steel Cove Base Straight 96 inch: [CBM-B-SS4-206-96](#)
 10. 6 inch Stainless Steel Cove Base Straight 120 inch: [CBM-B-SS4-206-120](#)
 11. 6 inch Stainless Steel Cove Base Inside Corner: [CBM-IC-SS4-206](#)
 12. 6 inch Stainless Steel Cove Base Inside Corner: [CBM-OC-SS4-206](#)
- 2.05 FABRICATION**
- A. Stainless Steel Cove Base shall be factory formed from stainless steel sheet with directional polish grain oriented parallel with length.
1. Edges shall be free of burrs.
 2. Standard Length: 8'-0"
 3. Fabricate exposed ends with filler to match profile of Sani-Base.
 4. Preformed corners shall be 90 degree, or as required to suit corner degree indicated on drawings. Fabricate preformed corners with minimum 4 inch legs.
- 3.02 PREPARATION**
- A. Surface preparation: Prior to installation, clean substrate to remove dirt, debris and loose particles. Perform additional preparation procedures as required by manufacturer's instructions.
- B. Protection: Take all necessary steps to prevent damage to material during installation as required in manufacturer's installation instructions.
- 3.03 INSTALLATION**
- A. Install the work of this section in strict accordance with the manufacturer's recommendations, using only approved mounting hardware, and locating all components firmly into position, level and plumb.
- 3.04 CLEANING**
- A. General: Immediately upon completion of installation, clean material in accordance with manufacturer's recommended cleaning method.
- B. Remove surplus materials, rubbish and debris resulting from installation as work progresses and upon completion of work.
- END OF SECTION**
- Part 3 - EXECUTION**
- 3.01 EXAMINATION**
- A. Verification of Conditions: Examine sub-surfaces to receive work and report detrimental conditions in writing to architect. Commencement of work will be construed as acceptance of sub-surfaces.
1. Painted walls shall be dry and thoroughly cured prior to application of Stainless Steel Cove Base.
 2. Perform adhesion test on painted drywall or plaster walls to receive Stainless Steel Cove Base in accordance with manufacturer's installation instructions to verify proper adhesion.
 3. Verify floors within areas where Stainless Steel Cove Base is to be installed are level to within 1/8 inch in 10'-0".
- B. Coordination: Coordinate with other work which affects, connects with, or will be concealed by this work.
1. Coordinate installation of Stainless Steel Cove Base with application of wall finishes.
 2. Where stainless steel Stainless Steel
- Cove Base is installed after application of wall finish, verify application is completed and ready for installation of base.
3. Install Stainless Steel Cove Base prior to application of finishes such as wall tile, stainless steel wall sheeting, FRP, etc.