

4420 ANDREWS ST, STE A  
NORTH LAS VEGAS, NV 89081  
PH: (702) 968-0222  
FAX: (702) 728-2777

ALL DRAWINGS MUST BE  
SIGNED FOR APPROVAL  
PRIOR TO PRODUCTION

- REVISE & RESUBMIT
- APPROVED AS NOTED
- APPROVED

X \_\_\_\_\_  
DATE: \_\_\_\_\_

DELIVERY, STORAGE &  
HANDLING

A. TRANSPORT, LIFT AND  
HANDLE UNITS WITH CARE  
AVOIDING EXCESSIVE STRESS  
AND PREVENTING DAMAGE.  
USE APPROPRIATE EQUIPMENT.

B. STORE PRODUCTS IN  
MANUFACTURER'S UNOPENED  
PACKAGING UNTIL READY FOR  
INSTALLATION, IN A CLEAN DRY  
AREA PROTECTED FROM  
WEATHER, MOISTURE AND  
DAMAGE. STORE UNITS  
UPRIGHT AND NOT STACKED  
UNLESS PERMITTED BY  
MANUFACTURER.

TOLERANCES:

A. DIMENSIONAL OVERALL  
TOLERANCE +/- 1/4"

B. THICKNESS +/- 1/4"

C. WARPAGE OR BOWING 1/16"  
PER FOOT.

COMPANY NAME:

LEGACY

DESCRIPTION:

CATALOG PART

JOB NUMBER:

MATERIAL:

AUTHOR:

KEVIN O

DATE:

3/29/2024

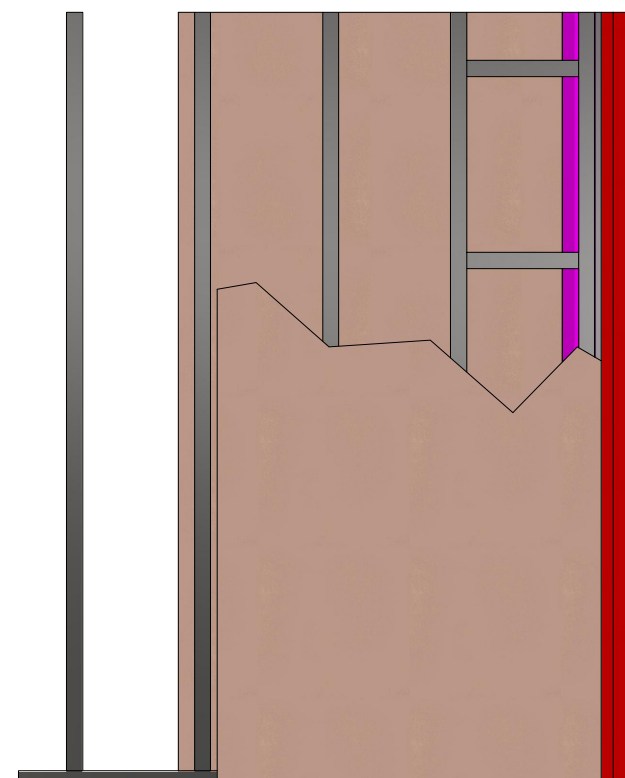
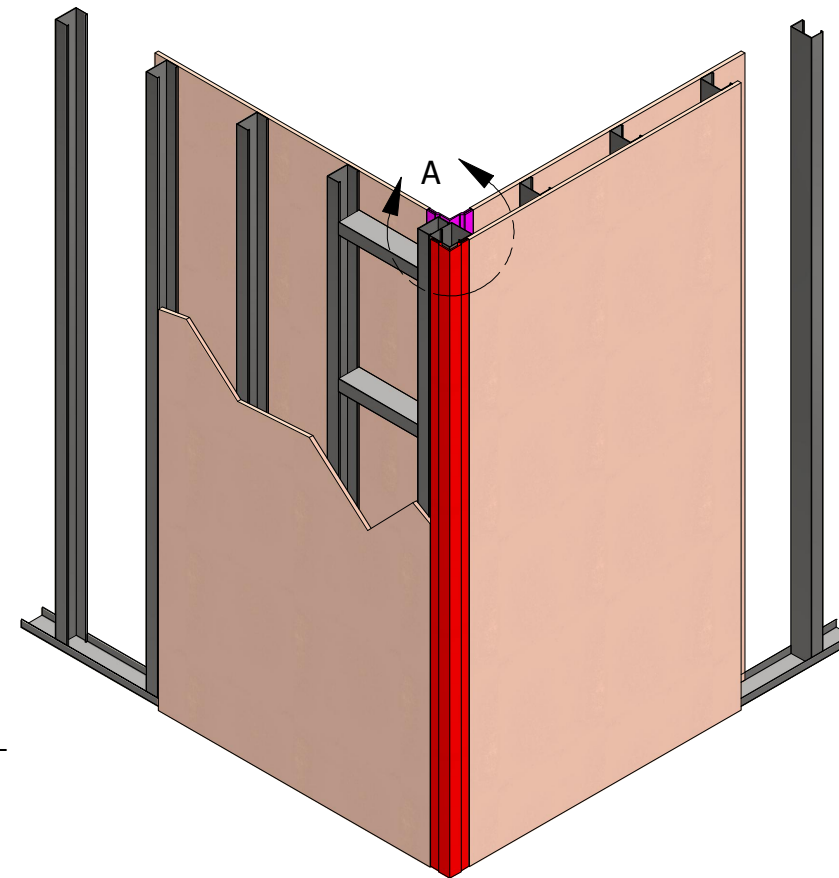
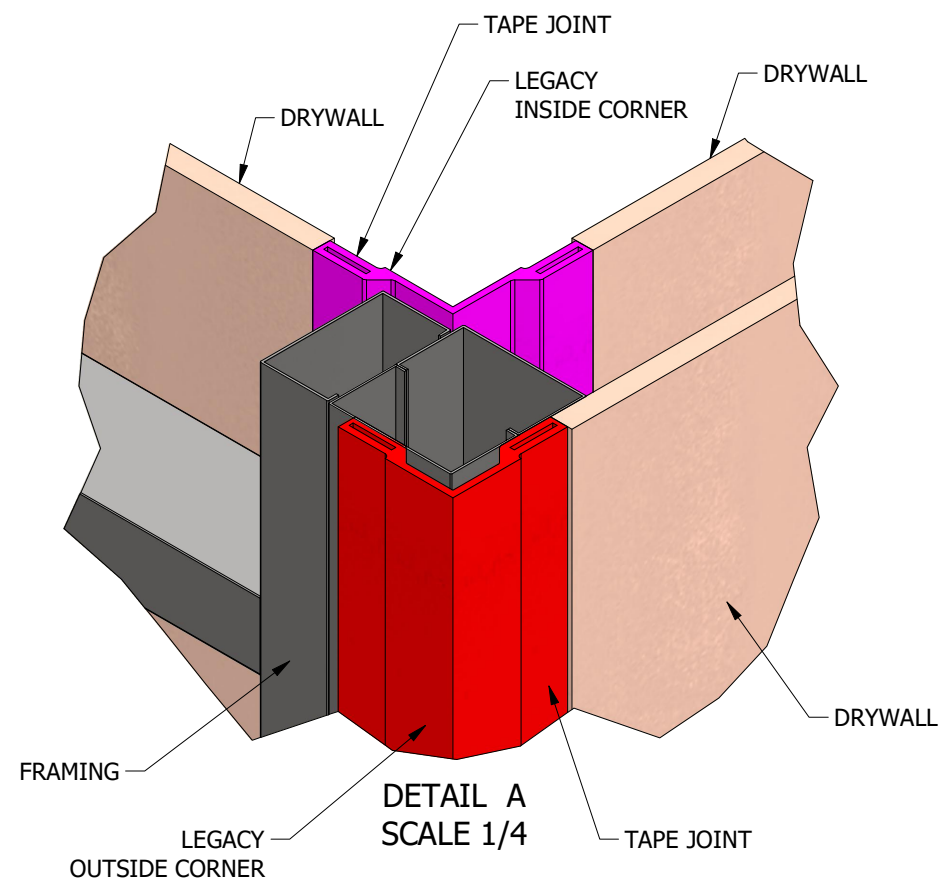
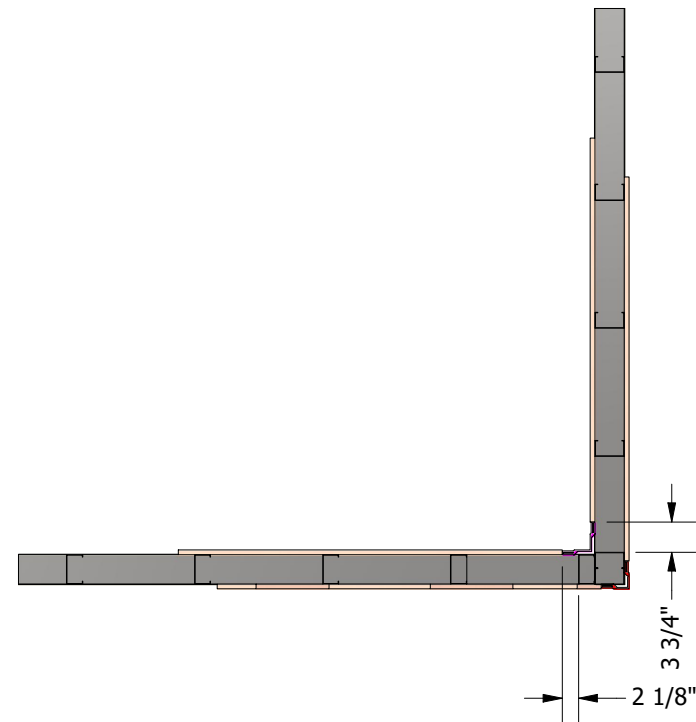
REV:

1

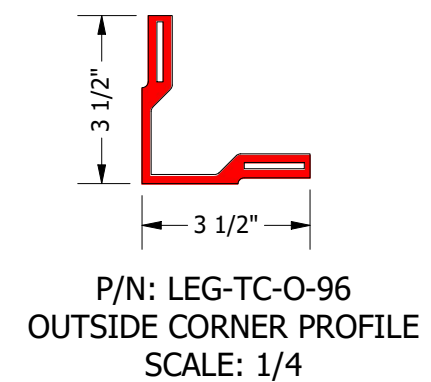
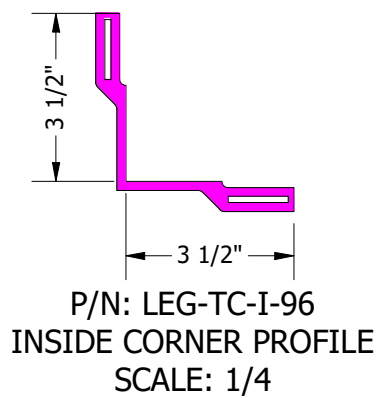
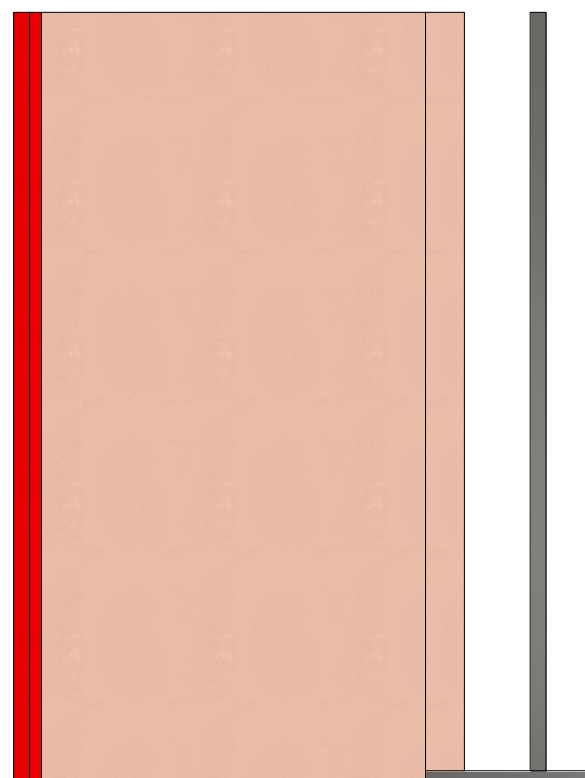
PROJECT:  
AREA OF WORK

SHEET:

1 OF 1



P/N: TYPICAL WALL  
SCALE: 1 / 24





Tape Joint for  
seamless integration



Drywall compound floated over tape joint.

# Top Down View

Reinforced corner guard

